



Understanding **Social Work?**

How to cite these slides

African Social Work Network (ASWN) (2020), Understanding Social Work? Paste weblink here

What is the starting point?

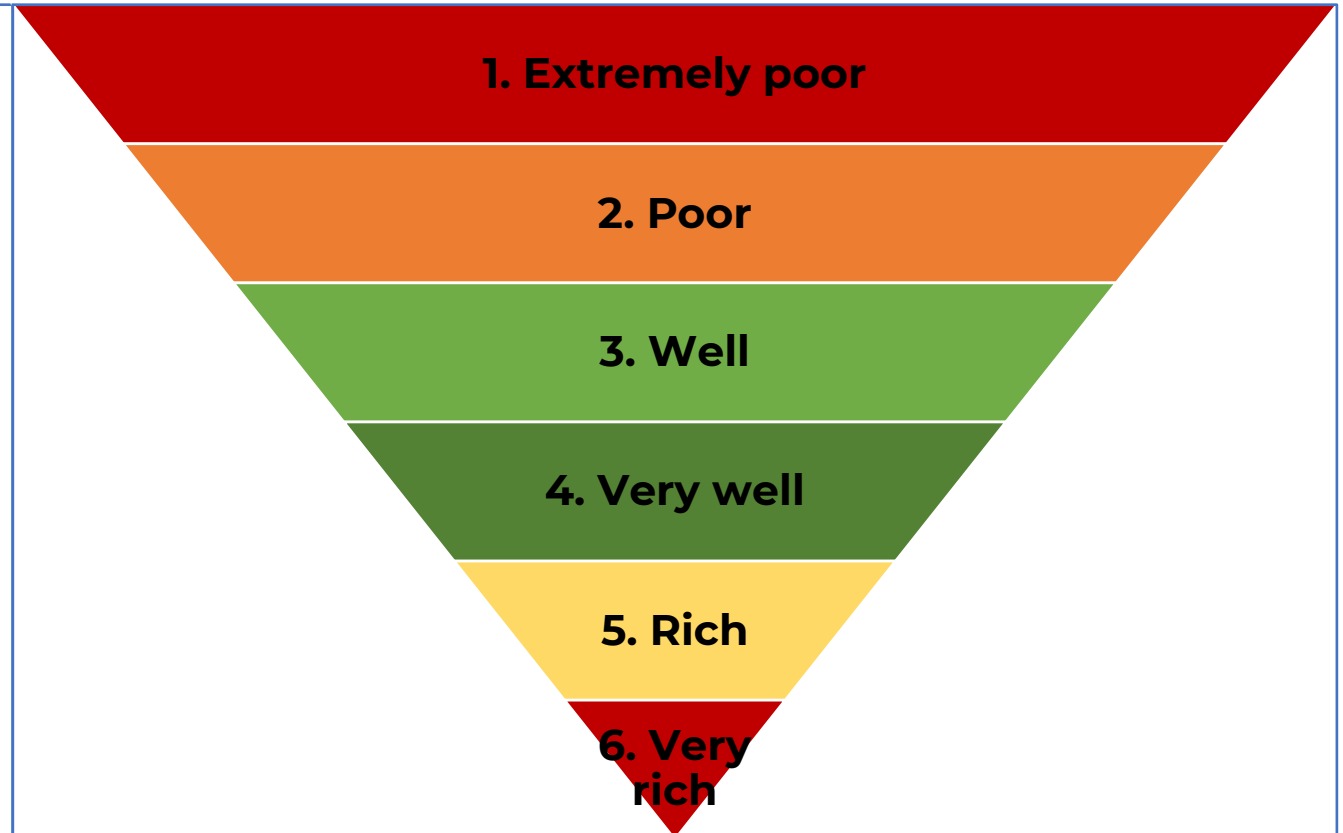
- To understand social work, we have to understand social problems first.
- Think of yourself, your family and community
- Have you noticed that:
 - Some people do not have enough food
 - Some do not have good houses or clothes
 - Some do not have a good education, health or protection
 - Some have enough or plenty of all these basic things that others are missing
- If you have noticed these differences, then you are ready to understand Social Work.

Classes of people in our society

- With the knowledge of communities that you now have, you are able to classify people into:
 1. People in extreme poverty who always struggle to survive (very poor people)
 2. People who are in poverty and struggling (poor people)
 3. People who are well, not in poverty, not struggling
 4. People who are very well, unlikely to struggle
 5. People who are rich, and will never struggle
 6. People who are very rich, and have far more than they need
- Which class are you are from 1-6 above?
- The best class to be in for everyone is Classes 3-4

What is the role of Social Work?

- Presently, in Africa, most people are poor or extremely poor (about 75%)
- The role of Social Work is to ensure that we are all **well** and **very well**, but how?

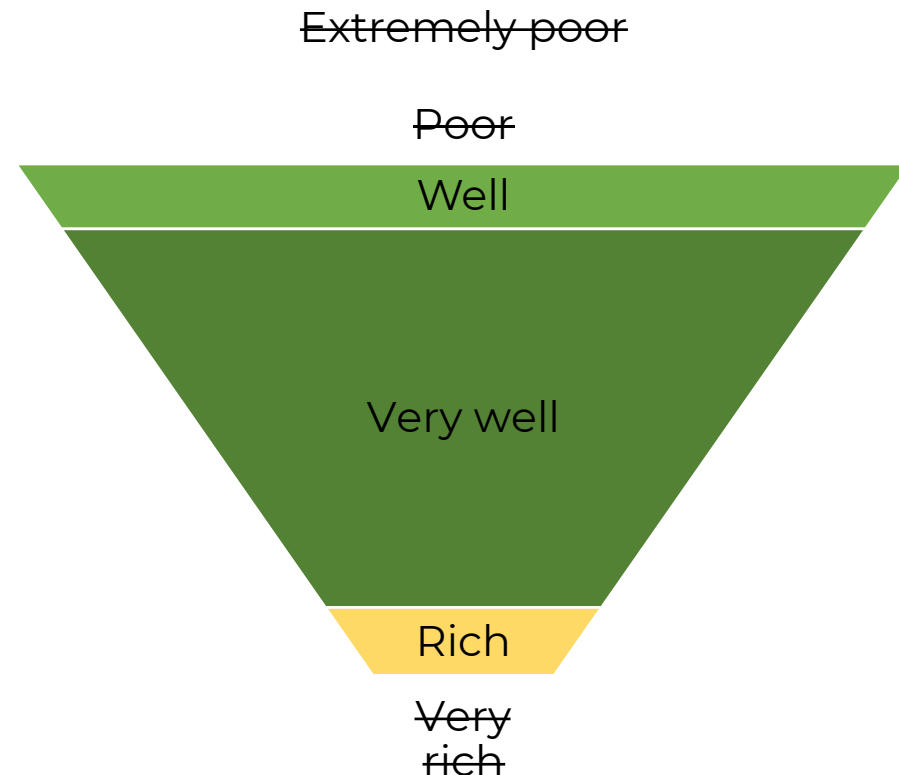


Why are people poor or extremely poor, rich or very rich?

- Social Work tries to answer these questions, but sadly there is no single answer?
- What do you think?
- Is it Colonization? Modernisation? Urbanization? Globalisation?
Culture? Corruption? Climate? Environment? Spirituality?

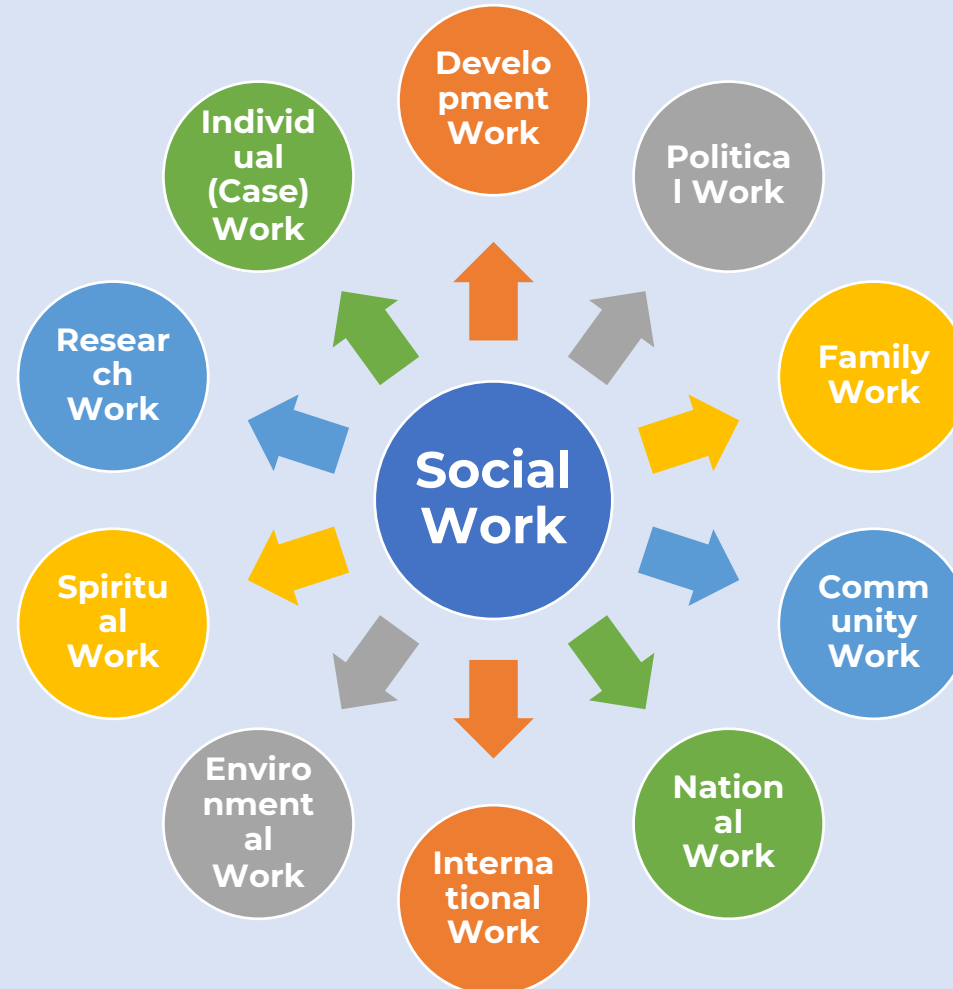
Putting everyone above 'well'

- As said in the previous slide, Social Work seeks to ensure that everyone is above well **very well** and that most people are **very well**
- It also seeks to ensure that the rich do not become too rich because usually when this happens others become too poor
- But, how is this achieved?



Methods of Social Work

- Developmental Social Work
- Community Social Work
- Political Social Work
- Family Social Work
- Group Social Work
- National Social Work
- International Social Work
- Research Social Work
- Environmental Social Work
- Spiritual Social Work
- Individual (Case) Social Work




How to address social problems where you live?

- Where do you live: village, suburb, township, school, mission, mine, farm or town or two places?
- Identify the social problems where you live
- Identify what methods of social work are being used
- Identify the methods of social work you can use
- Identify specific activities being done to address the problems
- Identify people who are doing this work?
- Implement activities that can solve the problems
- However, you will probably need more knowledge, ethics, experience, collaboration, funding and skills to solve many of these problems
- Seek professional help from Social Workers or train as a professional Social Worker

THE END





Becoming a social worker: prerequisites, qualifications and jobs

How to cite these slides

African Social Work Network (ASWN) (2020), Becoming a social worker: prerequisites, qualifications and jobs. [Paste weblink here](#)

What knowledge do you need before you study social work?

| Knowledge | Example or explanation | ✓/X |
|---------------|--|-----|
| Languages | Know your own language. If you can speak other languages you will be a great social worker. You learn from your family, community, experience and school. | |
| Communication | Learn about the different ways people communicate. Be a good communicator. You learn from your family, community, experience and school. | |
| Culture | Start by understanding your own culture, family and community. You learn this from experience, family and community. | |
| Society | Understand society, how it is organized and how it works. How do we make things fair for everyone? Learn to identify social problems of yourself, family and others. | |
| Art | Learn to be creative. How do we solve society's challenges? | |
| Geography | Know things like housing, urbanization, health, poverty and development. | |
| Income | Understand how people survive. If people need support, where do they get it? | |
| Governance | Who are the leaders and institutions of government? | |
| Science | How do people get sick, how does our environment make us sick? A bit of mathematics is good for social work. | |



8 things that will help you to become a Social Worker

1. Be a family person, value families
2. Be a community person, value communities
3. Know your own culture
4. Like an equal and just world
5. Know other social workers and what they do
6. Know social problems
7. Think like an artist
8. Think like a scientist

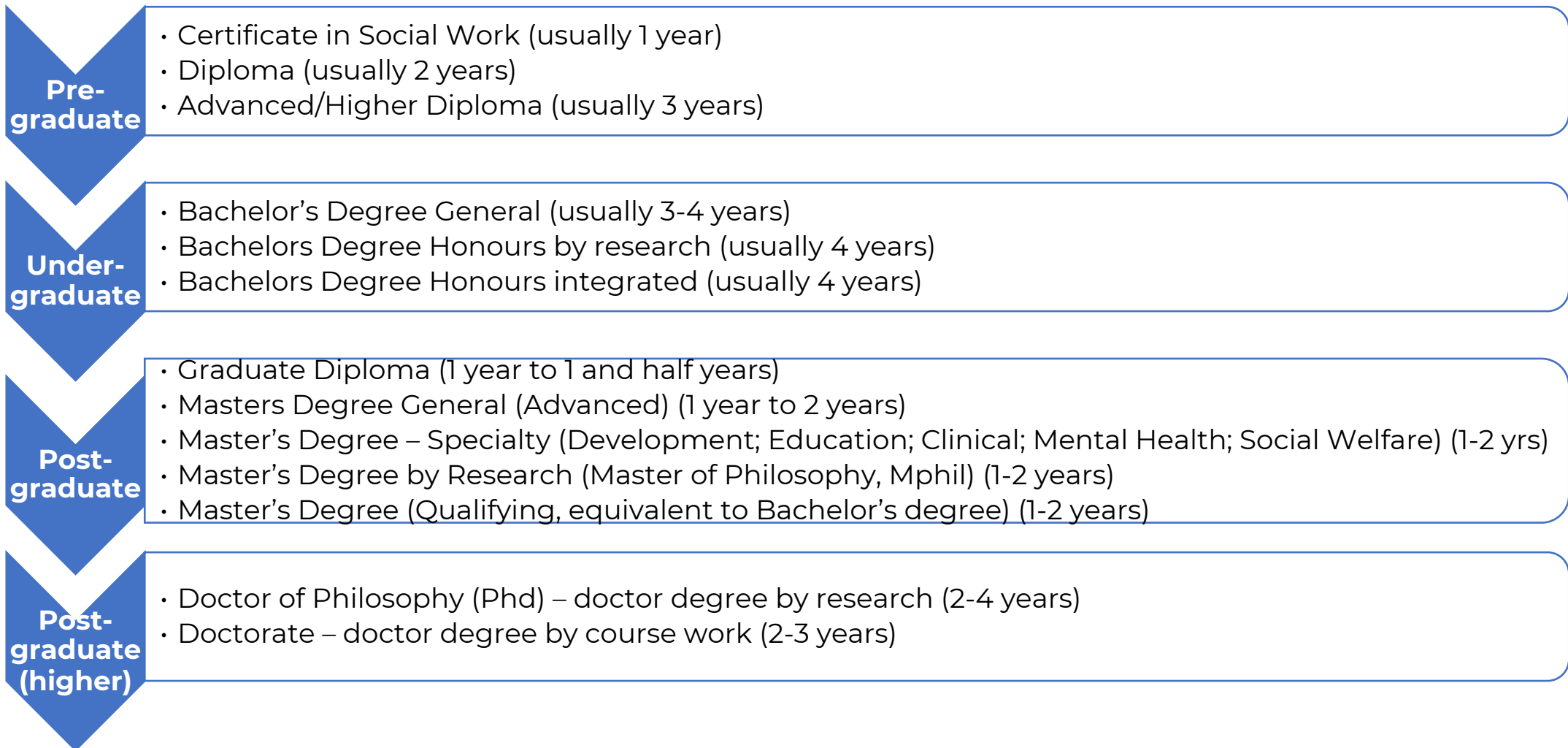
Academic prerequisites

- To study for a degree in social work, the requirements vary from country to country but these are some of the requirements if you are a student no:
 - Advanced or high school certificate with very good passes
 - Ordinary or general level certificate with very good passes
- Others can join social work if they are mature, experienced or have a diploma or degree from social work or another profession.
- More information can be obtained from universities, their websites or the local social work association

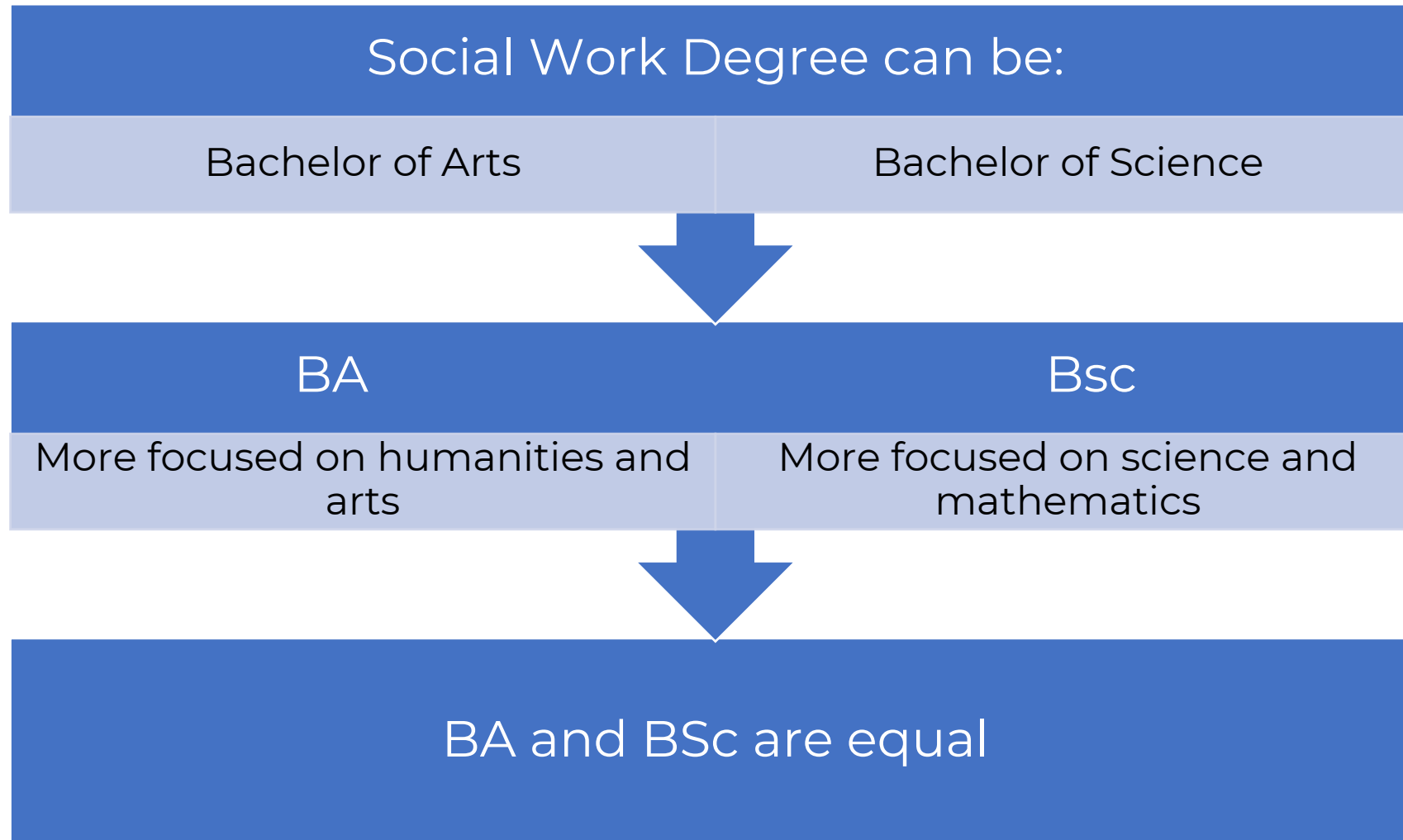
What you will study at University or College

- Development
- Community work
- Families
- Sociology
- Psychology
- Decolonization
- Theories like Ubuntu
- Professionalism
- Government
- Ethics
- Practical social work (Fieldwork practice)
- Facilitating groups
- Government systems
- Policies and laws
- Management
- Research
- Protection
- Income
- Poverty
- Justice and equality
- Collaboration
- Counselling
- **Ask your family member, teacher about other things that you will learn at university.**
- **You can also ask a social worker about what they learned at university or college**

Types of Social Work Qualifications



Science vs Arts



Where do Social Workers work?

- Community
- Government social welfare offices
- Government development offices
- Hospital/Clinic
- Rehabilitation institution
- War zones !!
- Refugee camp
- NGOs
- Workplace
- Remote or Online
- Prison
- School
- Council or municipality
- Industries

Where would you prefer to work?

List of jobs

- Development Worker
- Community Worker
- Group Worker
- Social Welfare Worker/Officer
- Medical Social Worker
- Clinical Social Worker
- Correctional Social Worker
- Military Social Worker
- Rehabilitation Social Worker
- Housing Officer
- Relief Officer
- Counsellor
- School Social Worker
- Disability Worker
- Child Protection Worker
- Psychiatric Social Worker
- Village Social Worker
- Political Social Worker
- Researcher
- Lecturer
- Consultant
- Human Rights Worker
- Social Advocate
- Manager
- Director
- Environmental Social Worker
- Spiritual Social Worker

Mark yourself

| Myself | ✓/x | What this means for you |
|--|-----|--|
| I do not meet any of the attributes required to be a social worker | | Sorry, but you can not become a social worker |
| I meet some of the attributes | | On the line, you may be a social worker |
| I meet most of the attributes | | Social work is for you |
| I meet all of the attributes | | Congratulations, social work is waiting for you! |



THE END

